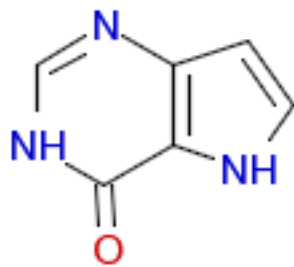


Structure	Cluster	ID
-----------	---------	----

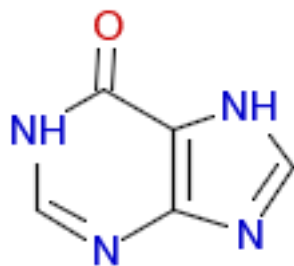
1

ZINC04617932



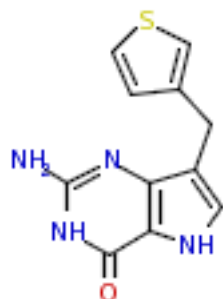
1

ZINC00391097



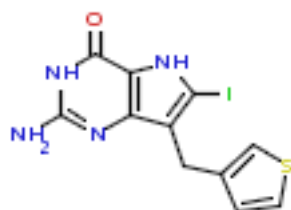
2

ZINC00005543



2

ZINC00833811



2

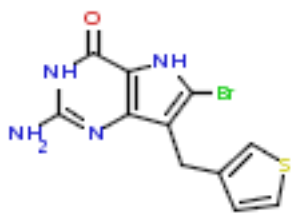
ZINC00016940



Structure	Cluster	ID
-----------	---------	----

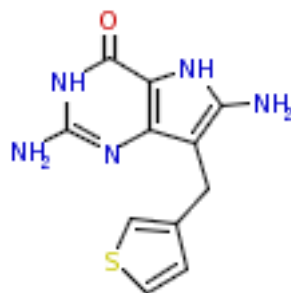
2

ZINC00016939



2

ZINC00014555



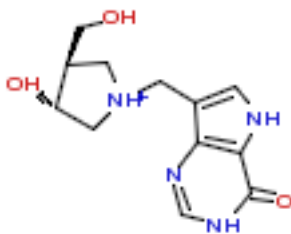
2

ZINC00005845



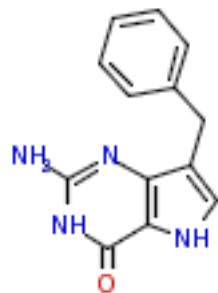
2

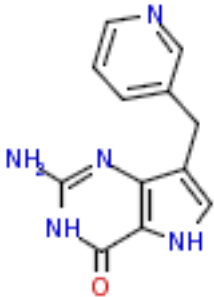
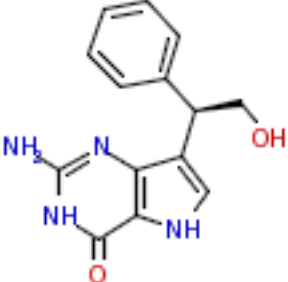
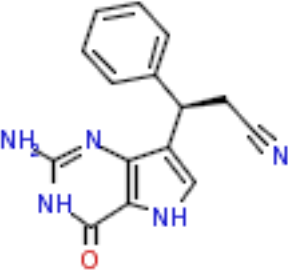
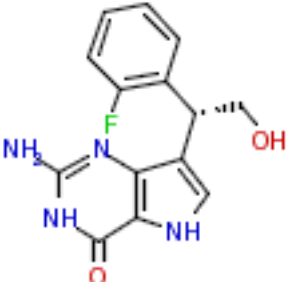
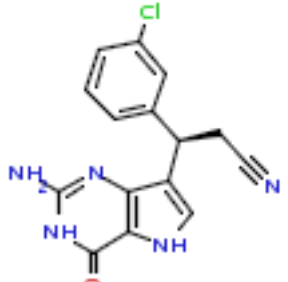
ZINC04617930



3

ZINC00005887

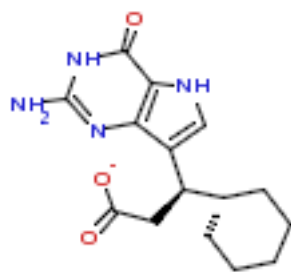


Structure	Cluster	ID
 <p>Chemical structure of a nucleoside derivative. The base is a pyrimidopyrimidine ring system with an amino group (NH<sub>2</sub>) at position 6, a carbonyl group (C=O) at position 2, and an imino group (=NH) at position 4. The sugar moiety is a ribose ring with a pyridin-2-ylmethyl group attached to the C5' position.</p>	3	ZINC00005610
 <p>Chemical structure of a nucleoside derivative. The base is a pyrimidopyrimidine ring system with an amino group (NH<sub>2</sub>) at position 6, a carbonyl group (C=O) at position 2, and an imino group (=NH) at position 4. The sugar moiety is a ribose ring with a (2-hydroxyethyl)benzyl group attached to the C5' position.</p>	3	ZINC00017532
 <p>Chemical structure of a nucleoside derivative. The base is a pyrimidopyrimidine ring system with an amino group (NH<sub>2</sub>) at position 6, a carbonyl group (C=O) at position 2, and an imino group (=NH) at position 4. The sugar moiety is a ribose ring with a (2-cyanoethyl)benzyl group attached to the C5' position.</p>	3	ZINC00008391
 <p>Chemical structure of a nucleoside derivative. The base is a pyrimidopyrimidine ring system with an amino group (NH<sub>2</sub>) at position 6, a carbonyl group (C=O) at position 2, and an imino group (=NH) at position 4. The sugar moiety is a ribose ring with a (2-hydroxyethyl)(2-fluorophenyl)methyl group attached to the C5' position.</p>	3	ZINC00007497
 <p>Chemical structure of a nucleoside derivative. The base is a pyrimidopyrimidine ring system with an amino group (NH<sub>2</sub>) at position 6, a carbonyl group (C=O) at position 2, and an imino group (=NH) at position 4. The sugar moiety is a ribose ring with a (2-cyanoethyl)(4-chlorophenyl)methyl group attached to the C5' position.</p>	3	ZINC00005684

Structure	Cluster	ID
-----------	---------	----

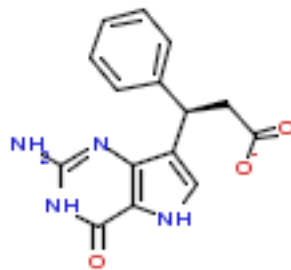
3

ZINC03788825



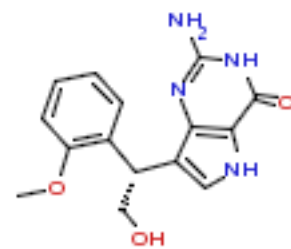
3

ZINC03788820



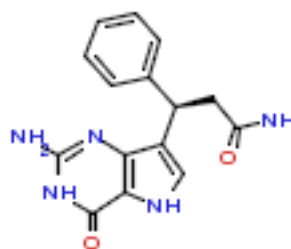
3

ZINC00017533



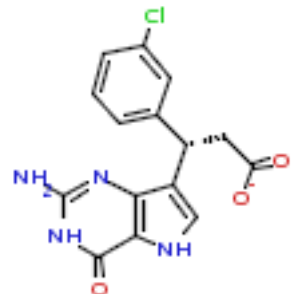
3

ZINC00008393



3

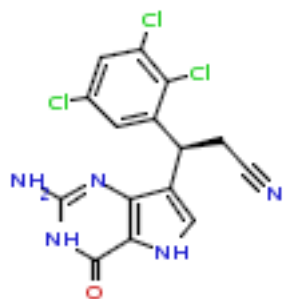
ZINC03797941



Structure	Cluster	ID
-----------	---------	----

3

ZINC03788814



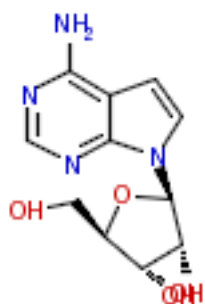
3

ZINC01489212



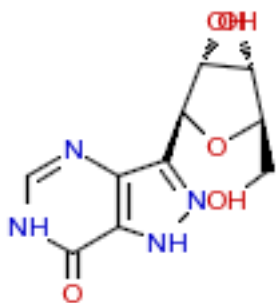
4

ZINC03832269



4

ZINC04617931



4

ZINC04617929

